

Homestream Quick Start Guide



Download the software from:

www.sony.co.uk/homestream



Sony Homestream –
photos, music and movies

SONY
make.believe

Homestream overview

Thank you for choosing to use Sony Homestream.

This software will enable you to share your favourite media files - such as photos, music and movies – so you can play them on different devices that are connected to your home network (Wired or Wi-Fi).

These devices may include Televisions, Blu-ray Players, Game Consoles, Mobile Phones, Computers and Network Media Players.

The Homestream software has to be installed on a computer and then configured to share the media folders that you choose.



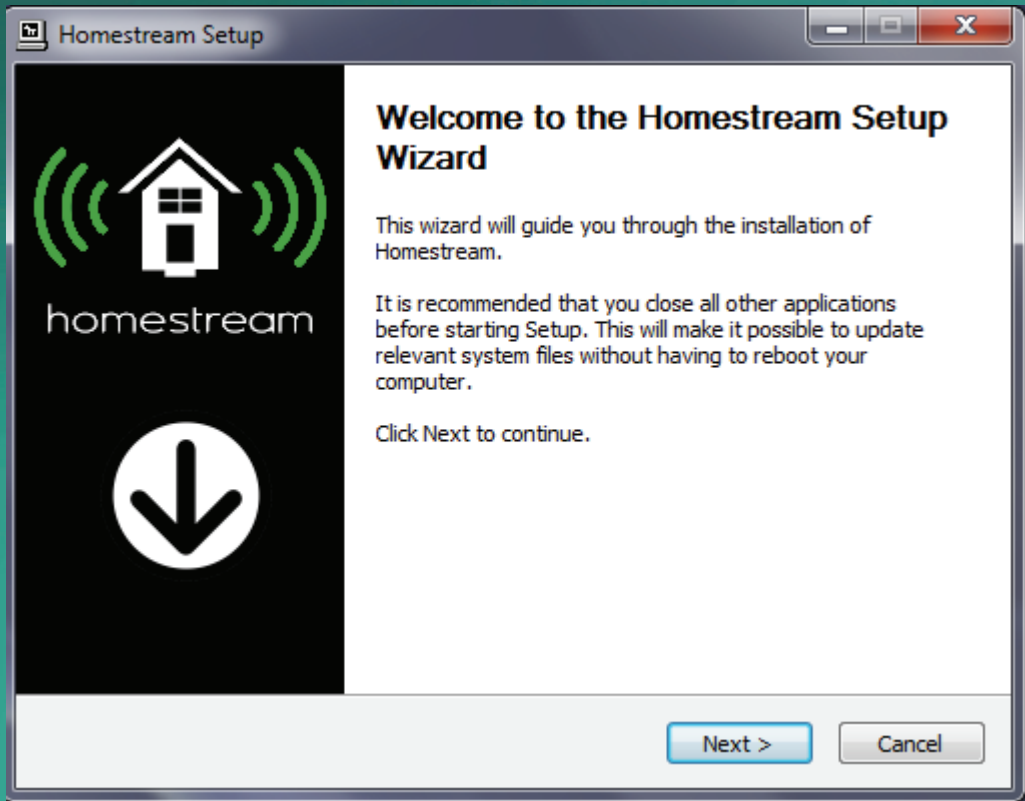
1. Download the Homestream software from: www.sony.co.uk/homestream

The software is available in different versions:

- Windows PC
- Mac
- Linux

Please choose the correct download link depending on your computer.
For example:

[Download for Windows](#)

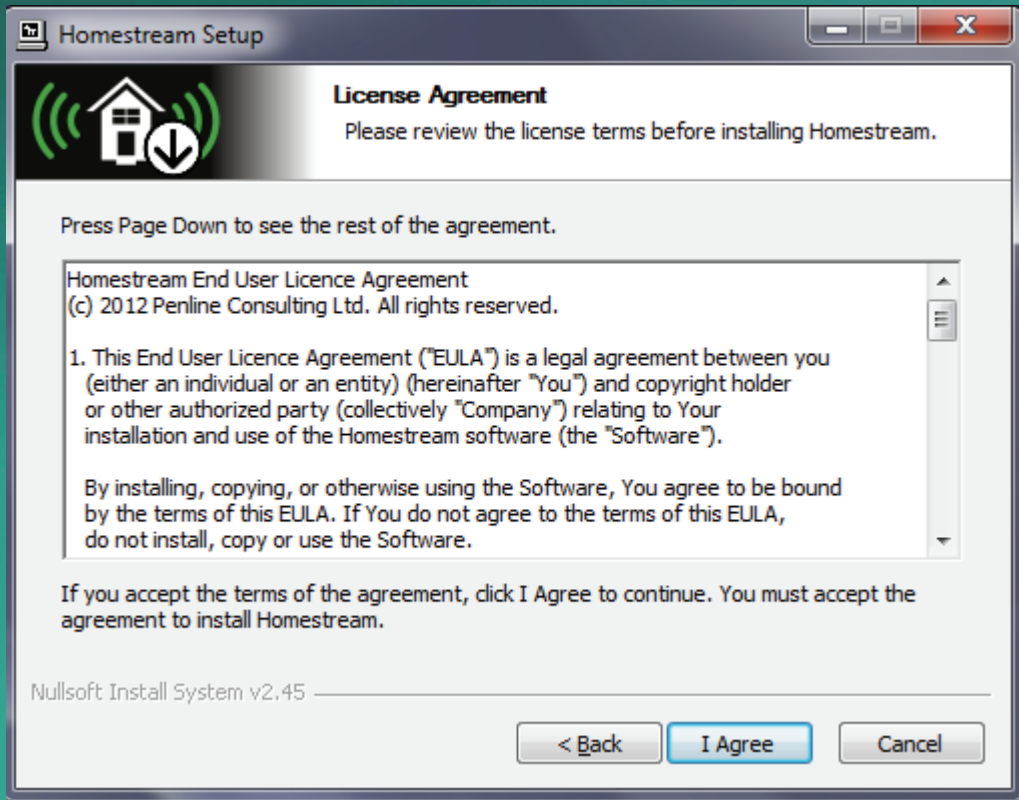


2. Start the Homestream Setup Wizard

Locate the downloaded file.

Double click the file to start the Setup Wizard.

Click '**Next**'.

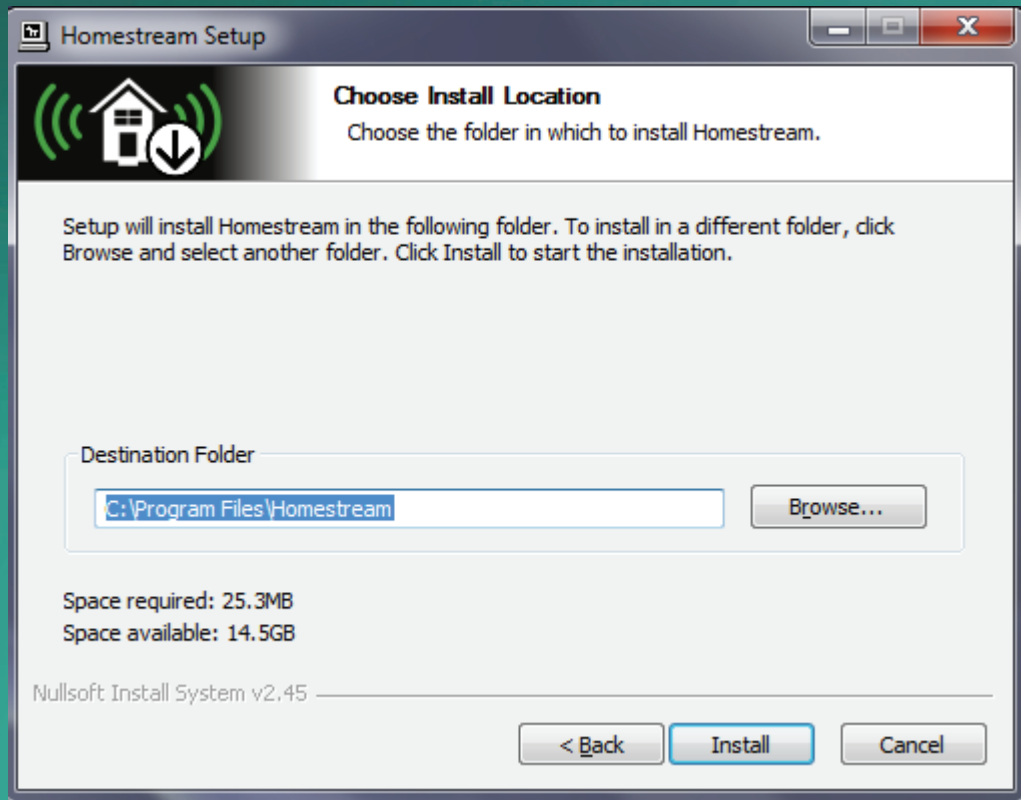


3. Confirm the License Agreement

Check the license agreement.

To accept the License agreement:

Click 'I Agree'.

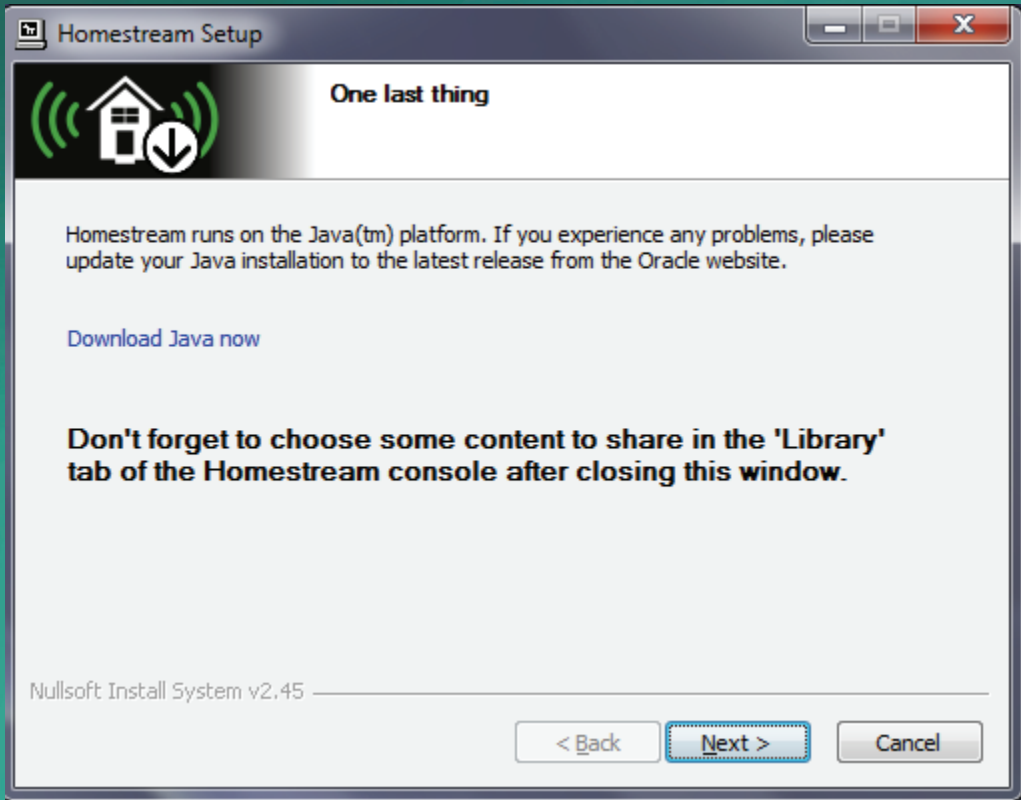


4. Choose Install Location

Accept the default location or, if you wish, you can change the destination folder.

To continue:

Click **'Install'**.

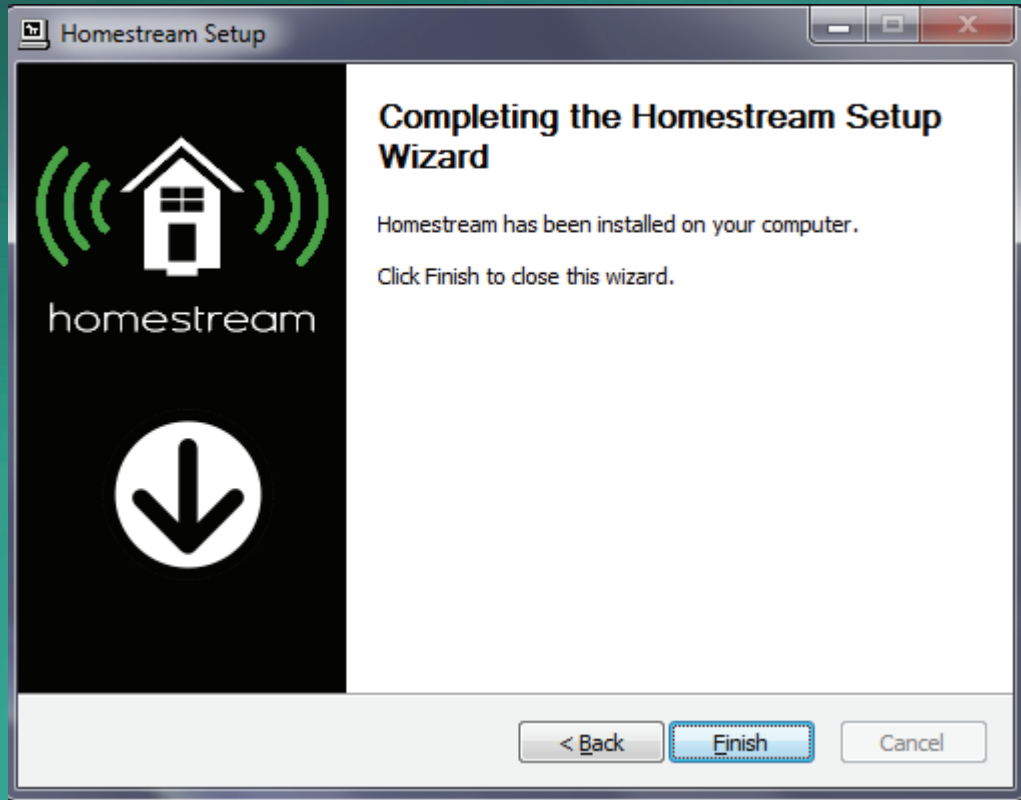


5. One last thing

Take time to review the information regarding Java.

We will also explain how to choose some media content to share later in this guide.

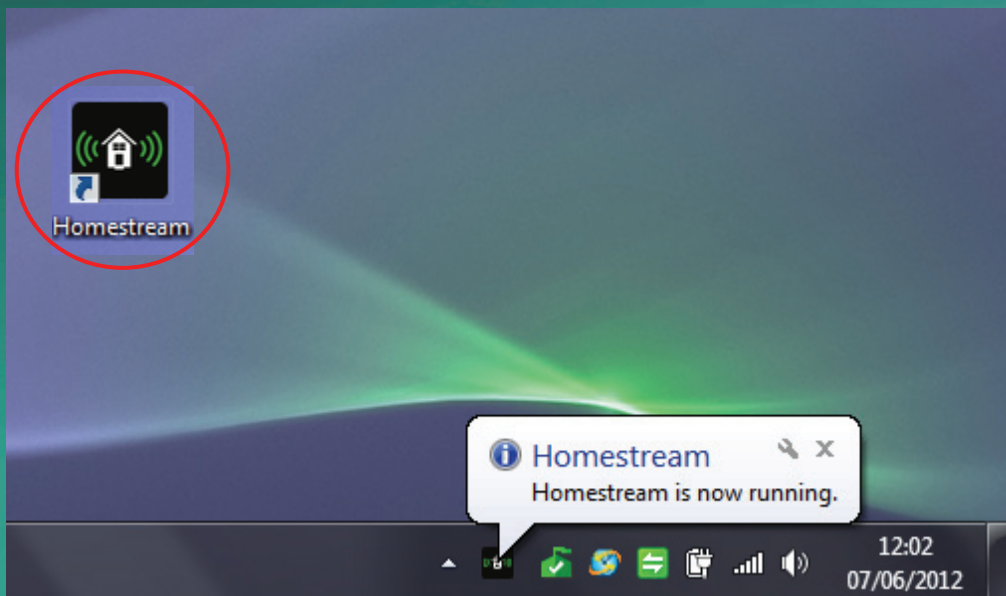
Click **'Next'**.



6. Installation complete

That completes the Homestream software installation.

Click **'Finish'**.



7. Start Homestream

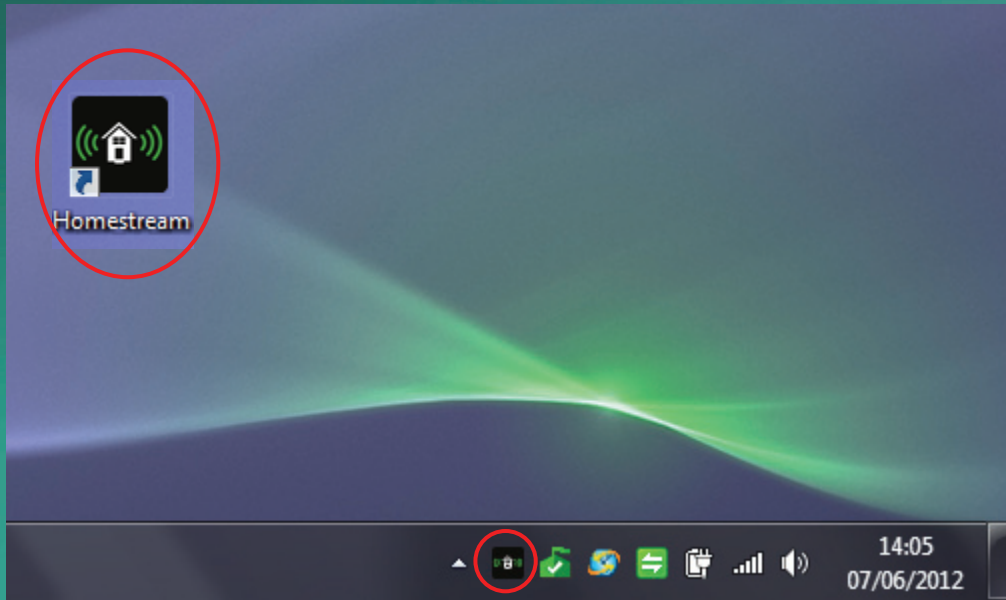
The Setup Wizard automatically places a Homestream icon on your computer Desktop.

Double click this icon to start Homestream.

NOTE: It takes a few seconds for Homestream to start running. If you find the icon does not appear to do anything, it is likely that you need to upgrade the Java software on your computer.

Follow this link, download and install the latest version of Java that is correct for your computer system.

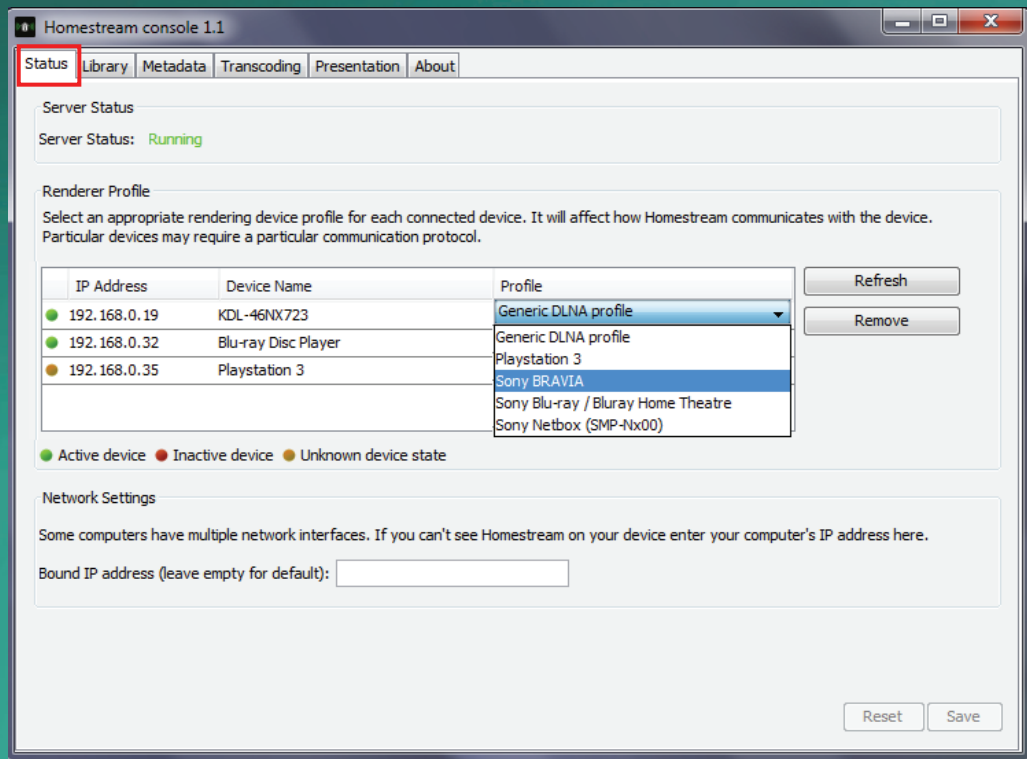
<http://java.com/en/download/manual.jsp>



8. Open the Console

We now need to check that Homestream is setup correctly for your devices and to choose which media folders we wish to share.

To do this, open the Console by double clicking the Desktop icon or the Homestream tray icon in the bottom right of the screen.



9. Status tab

This shows the devices that have been found on your home network.

You need to check that the correct 'Profile' is shown against each model listed under Device Names. Use the drop down list to change the profile if required.

Example:

The KDL-46NX723 is a Sony BRAVIA TV so the 'Sony BRAVIA' profile should be selected.

Click '**Save**' to keep your changes.

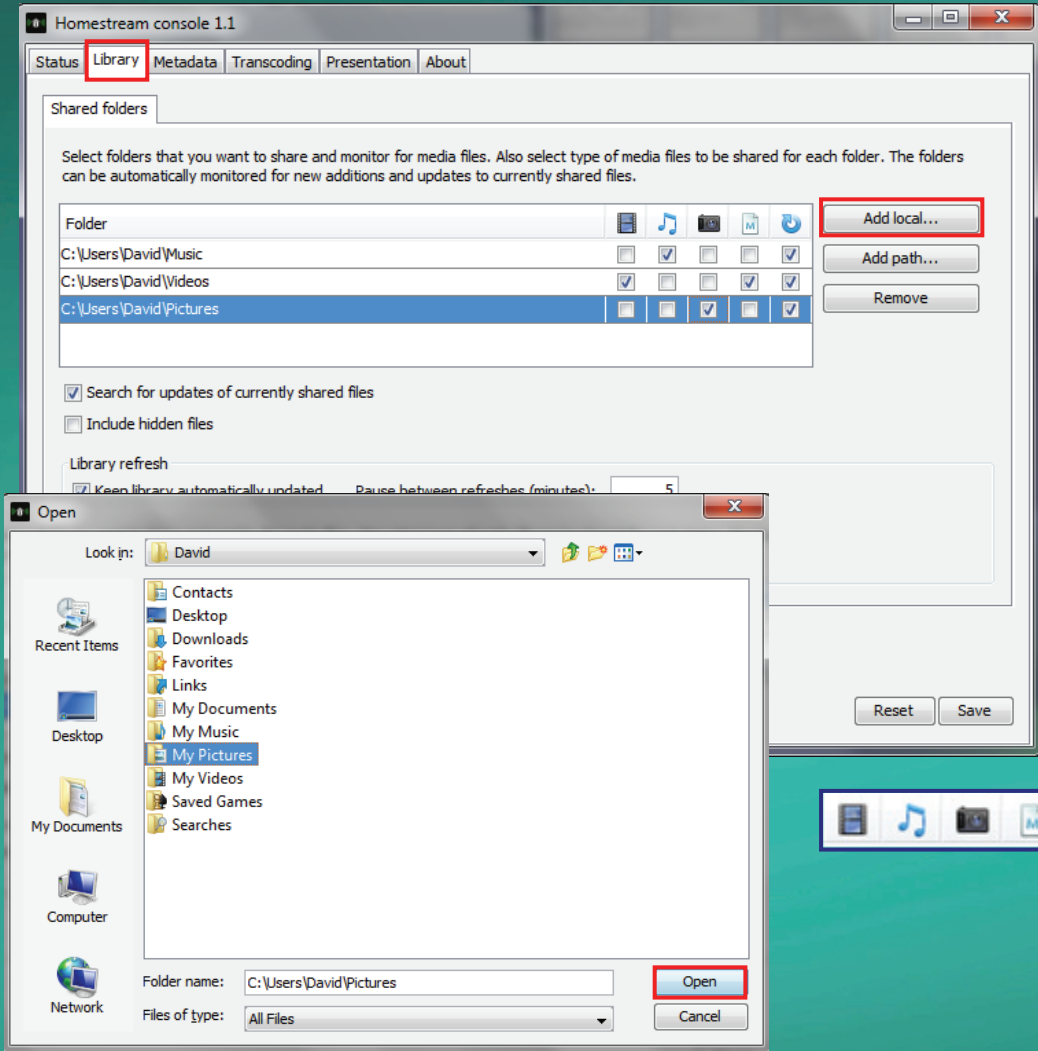
10. Library tab

Here we choose which media folders will be shared with devices on our home network:

- To add a folder on your computer, click on the **'Add local...'** button and use the window that next opens to navigate to a folder you wish to share. Click **'Open'** to add it.
- For each added folder you must select the type(s) of media it contains by ticking the appropriate boxes.

TIP: Descriptions of the icons can be seen if you place your cursor over each icon.

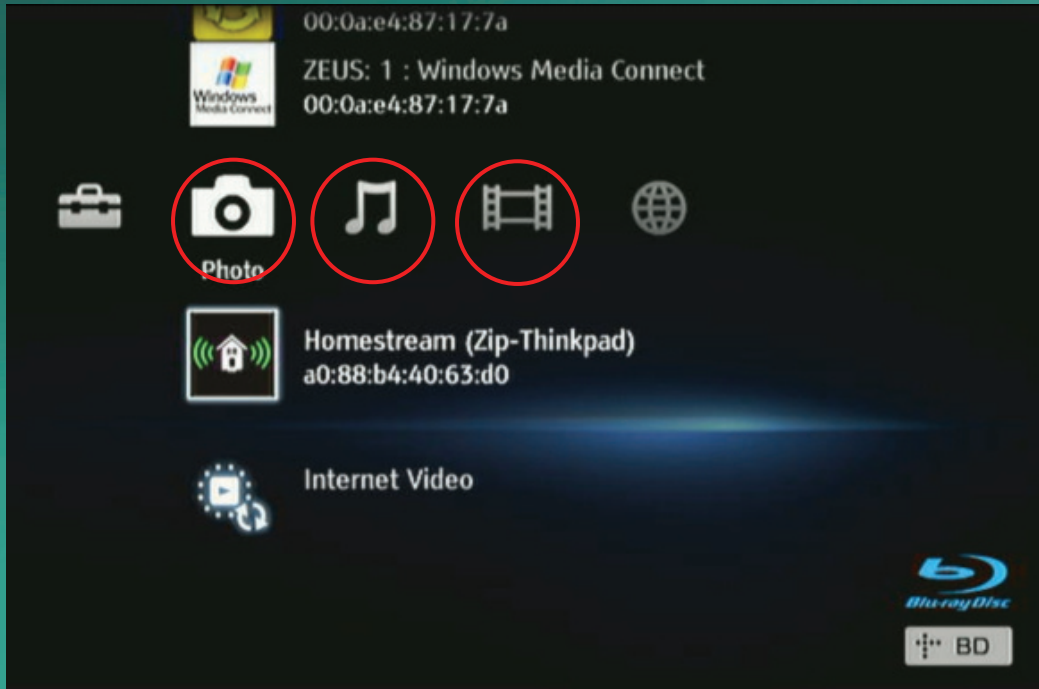
Click **'Save'** to keep your changes.





11. Check your devices

Ensure your BRAVIA, Blu-ray player, Netbox or PS3 is connected to your home network and functioning normally.



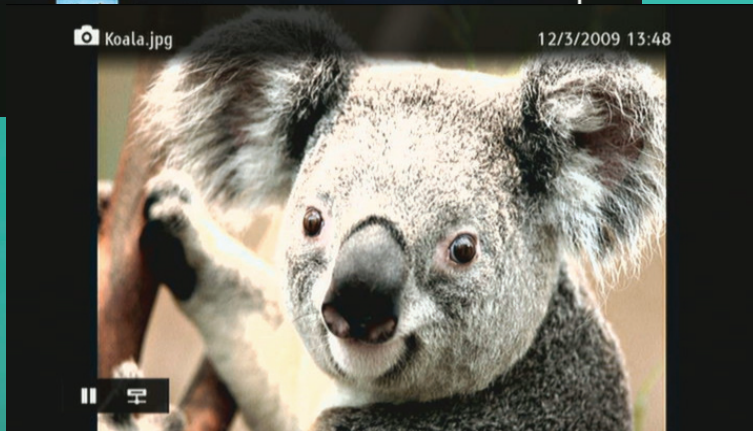
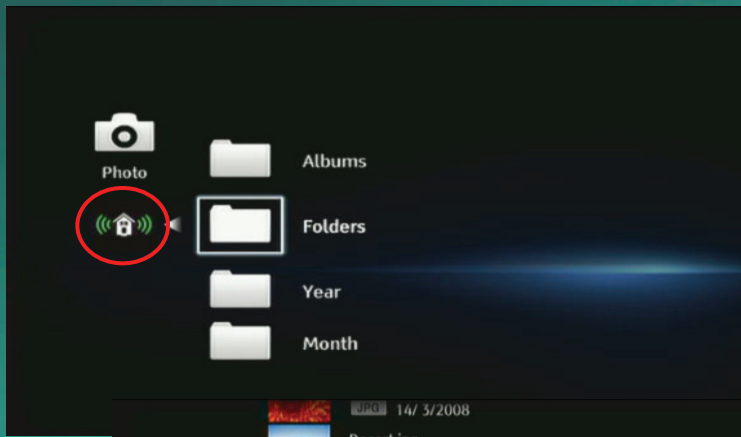
12. Find media

Press the blue 'Home Button' on the device's remote control and navigate to either Photo, Music or Video on the Menu Bar depending on what you want to browse.

13. Select Homestream

Select 'Homestream' from the list and navigate through your folder structure to the media you wish to view or play.

Highlight and select an item to view or play it on your device.





homestream